

**MINIMI
Pompi Pants**

Seam allowance **not** included.
Add 1cm overall.



50mm
(!) Before you start (!)
Make sure you confirm
that this square is 50mm

Back pipe



Cut 2 times
mirrored

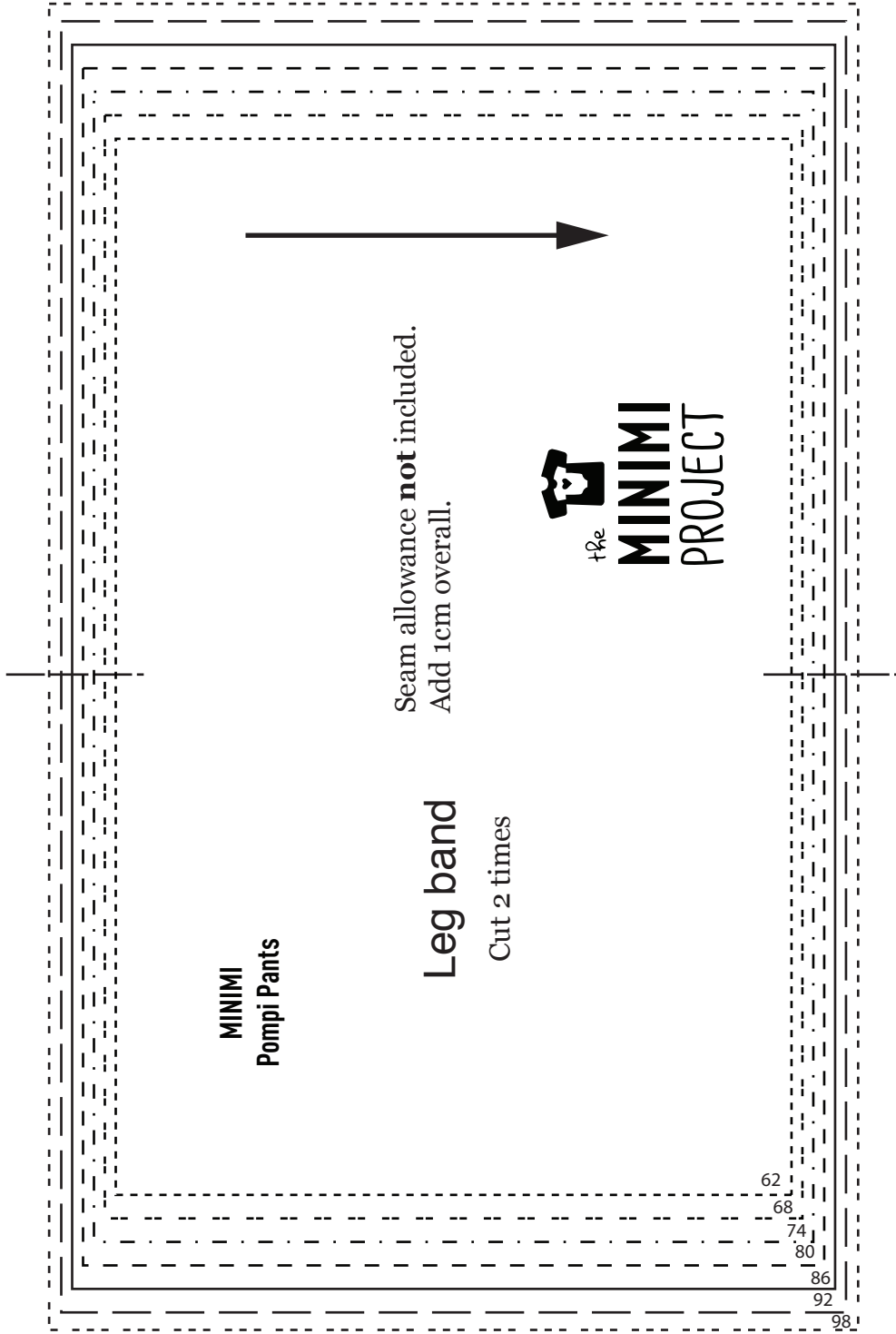
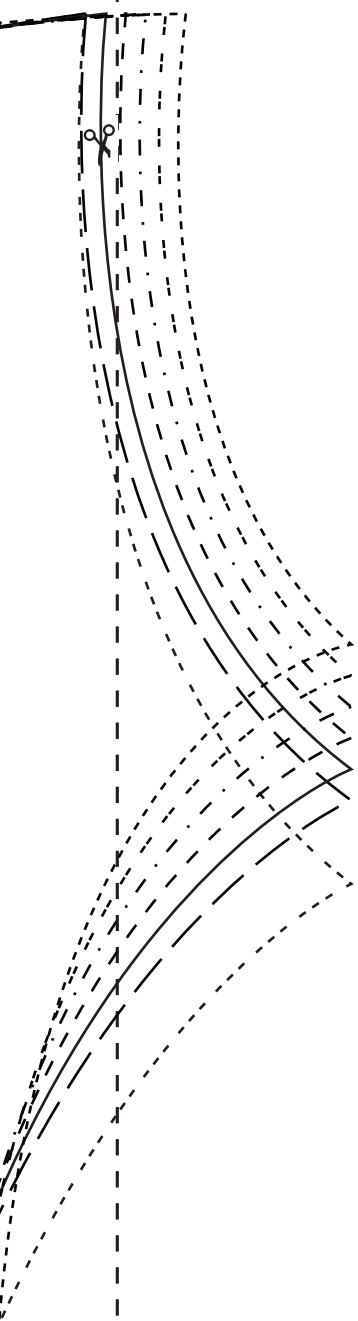
62

68

74

80

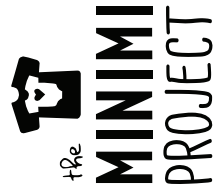




MINIMI
Pompi Pants

Seam allowance **not** included.
Add 1cm overall.

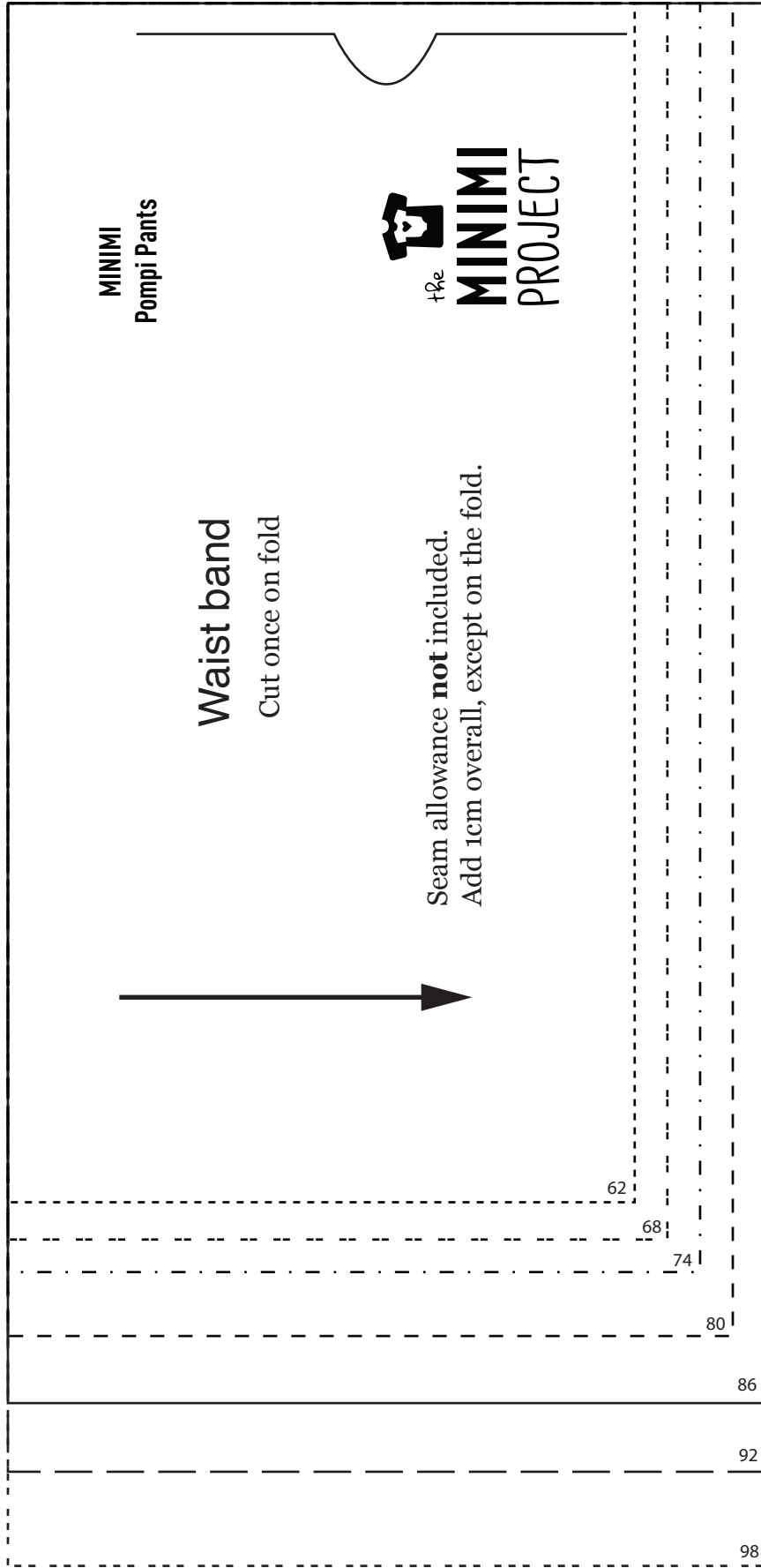
Leg band
Cut 2 times



62
68
74
80
86
92

98





MINIMI
Pompi Pants



Waist band
Cut once on fold

Seam allowance **not** included.
Add 1cm overall, except on the fold.

62

68

74

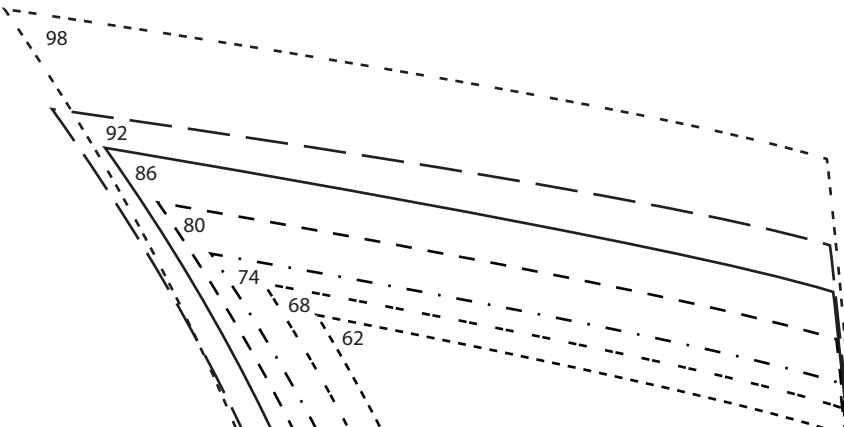
80

86

92

98





MINIMI
Pompi Pants

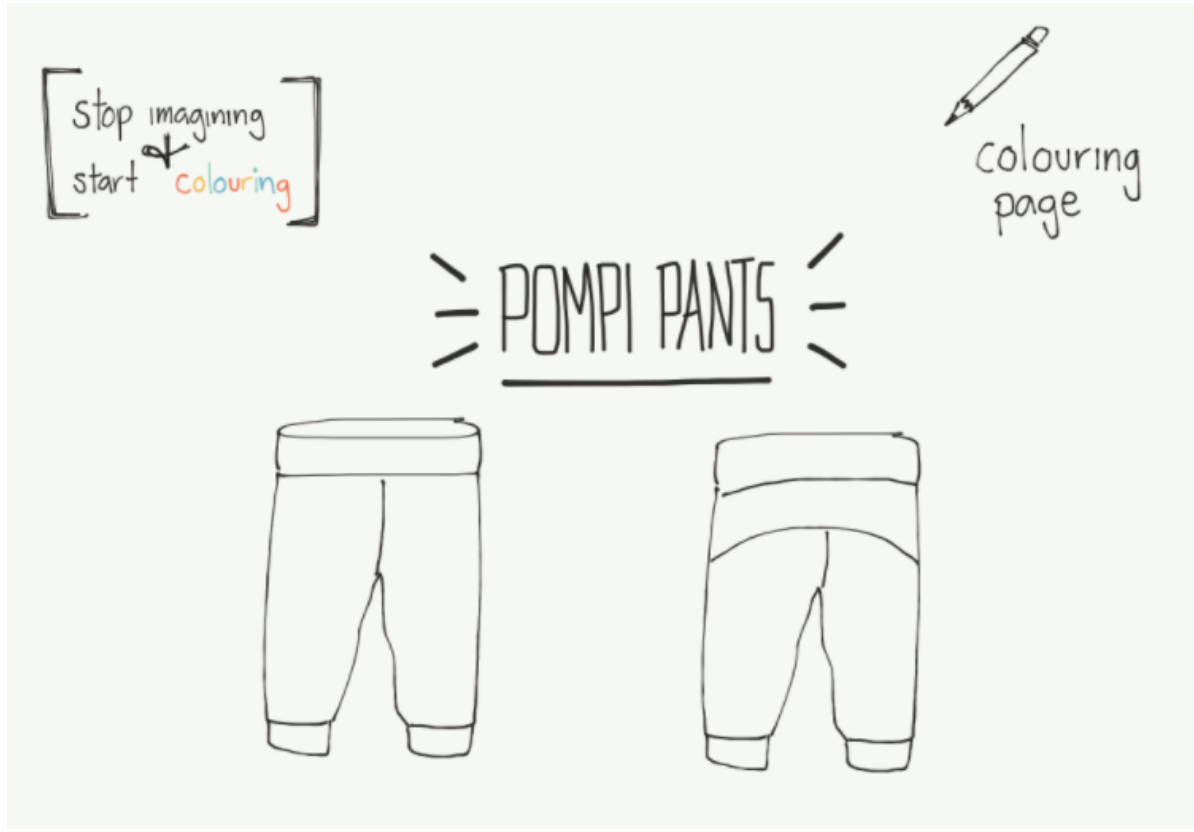
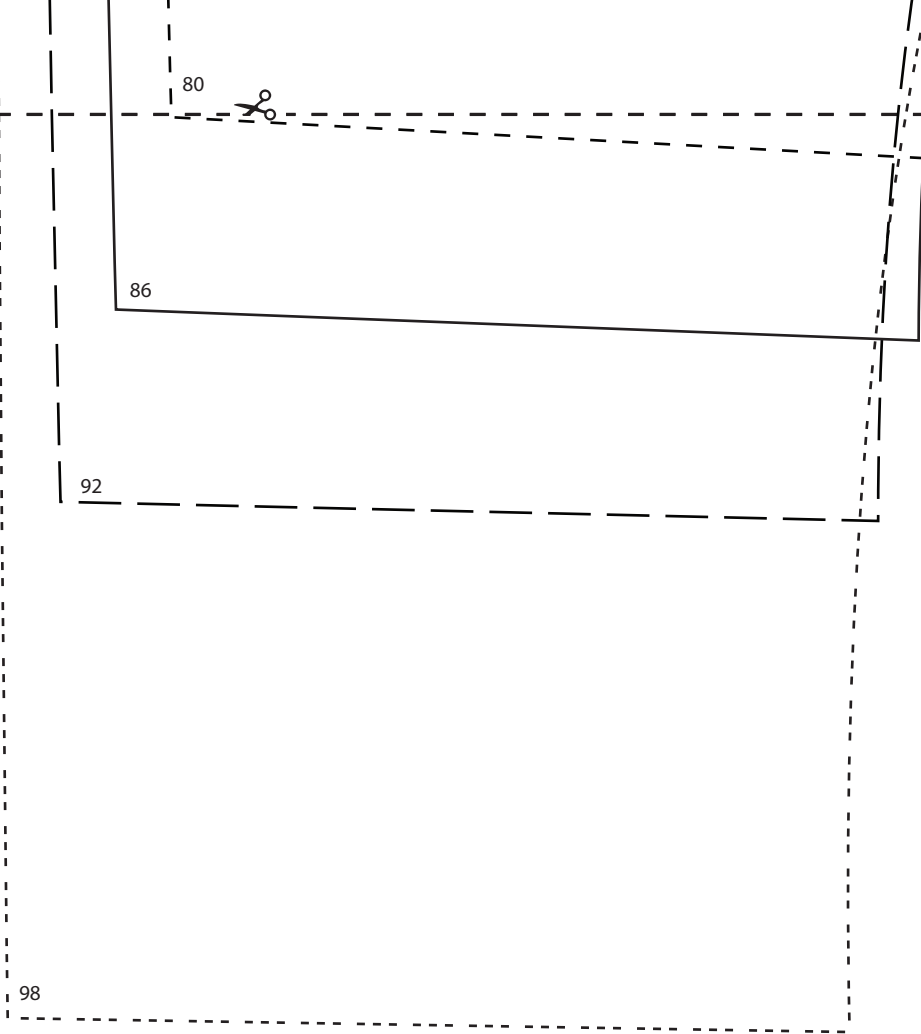
Back detail
Cut once

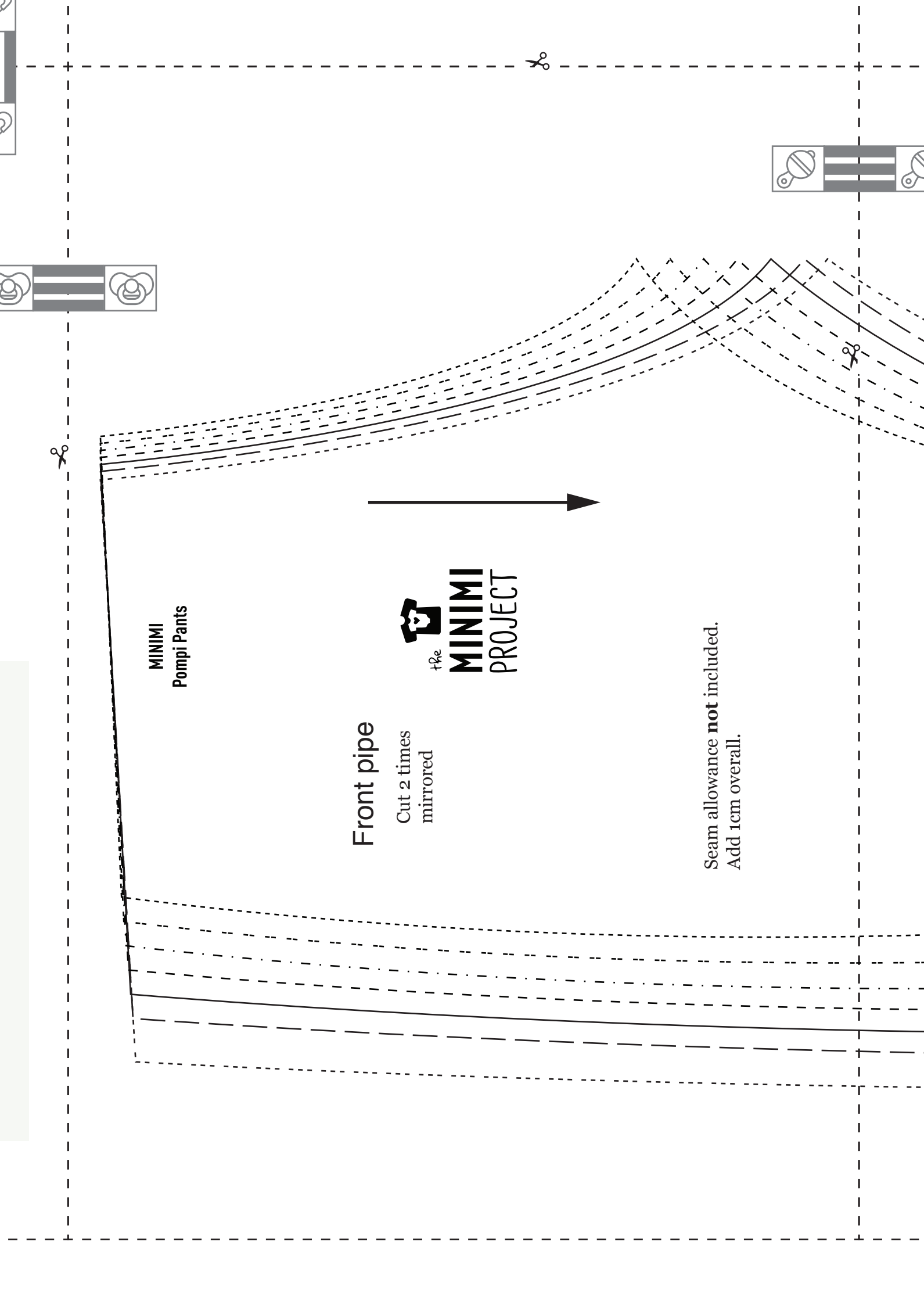


Seam allowance **not** included.
Add 1cm overall.

 **MINIMI**
PROJECT



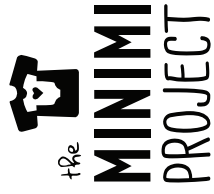




MINIMI
Pompi Pants

Front pipe

Cut 2 times
mirrored

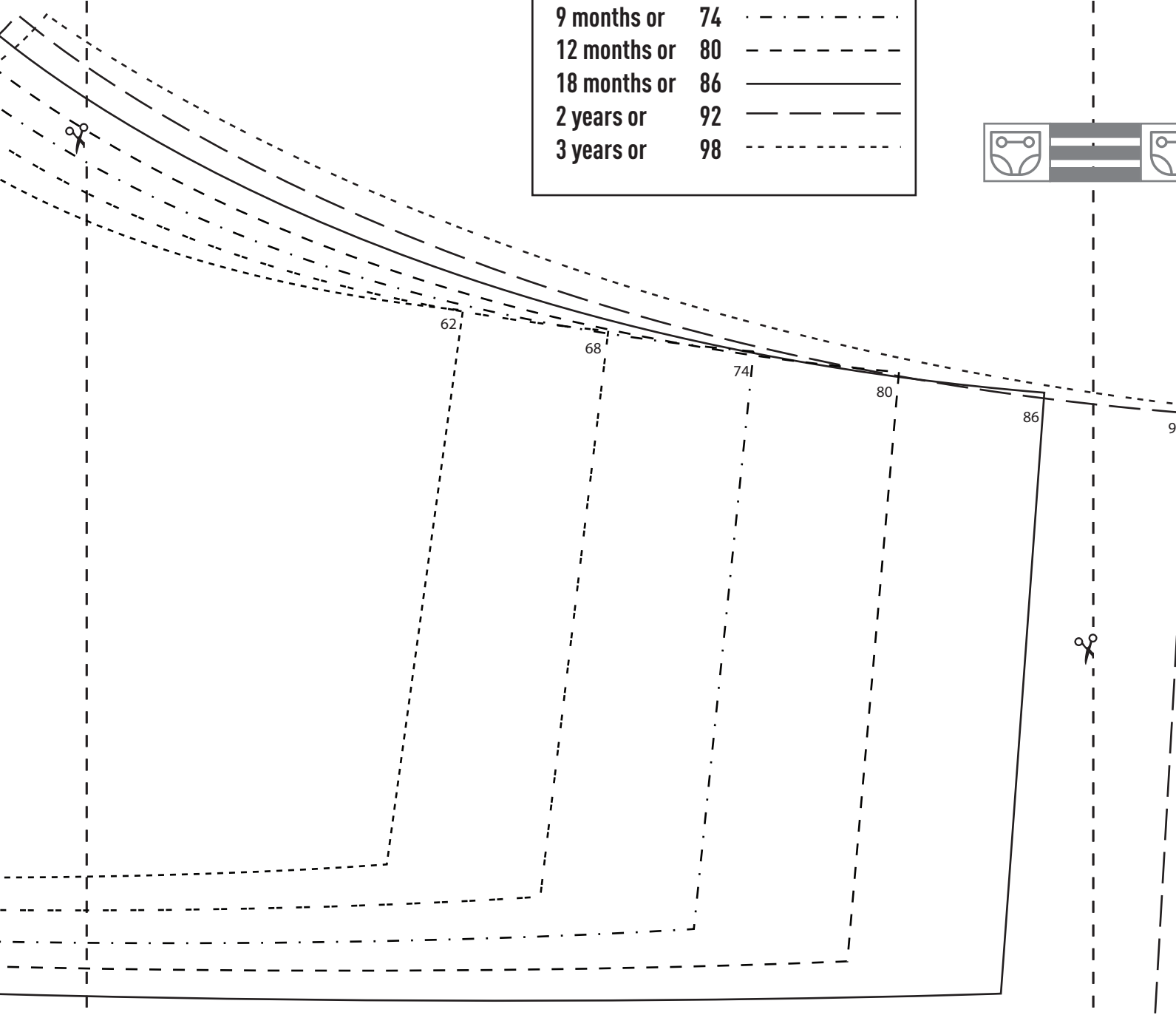


Seam allowance **not** included.
Add 1cm overall.





Size	
3 months or	62
6 months or	68
9 months or	74
12 months or	80
18 months or	86
2 years or	92
3 years or	98



62

68

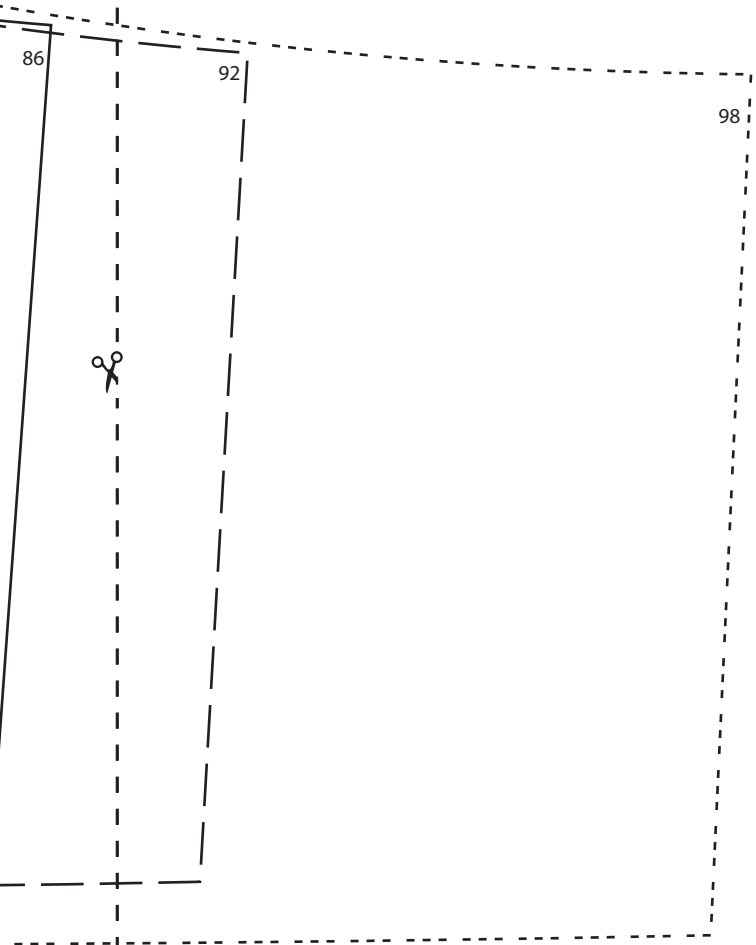
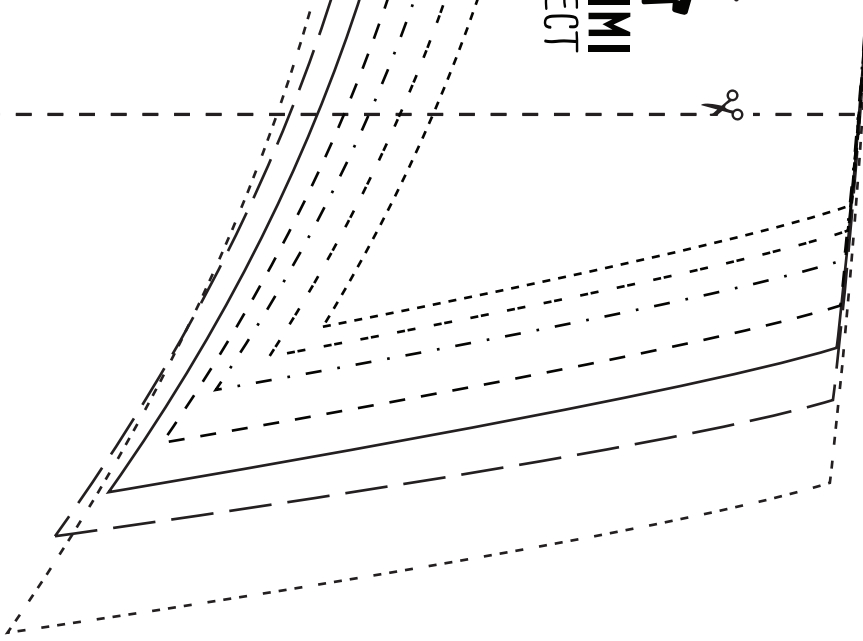
74

80

86

92

THE
MINI
PROJECT



Share on Instagram
#POMPIPANTS
and tag
@the_minimi_project
for a repost.